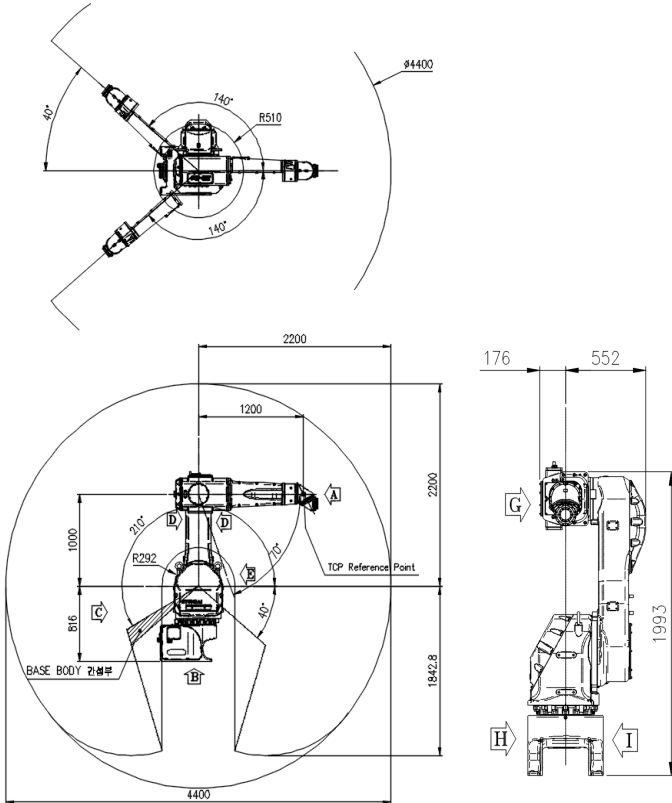
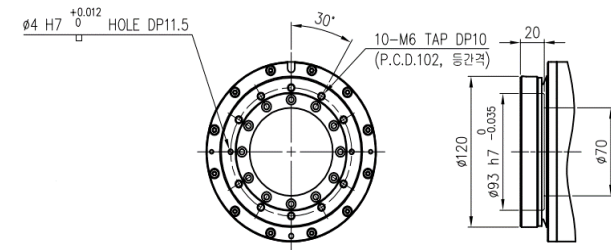


YP015A-

Installation		Application	
Floor	●	Spot Welding	
Ceiling		Arc Welding	
Wall	●	Handling	
		Assembly	
		Sealing	
		Painting	●

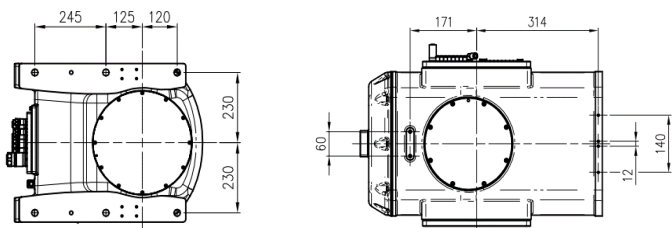


VIEW A Wrist Flange pec.

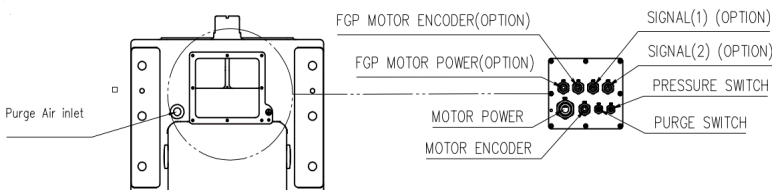


VIEW B Body Installation

VIEW F Bolt Spec. for App.



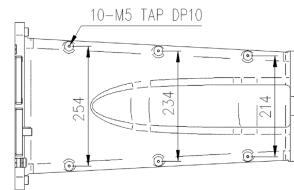
VIEW C Application Cable



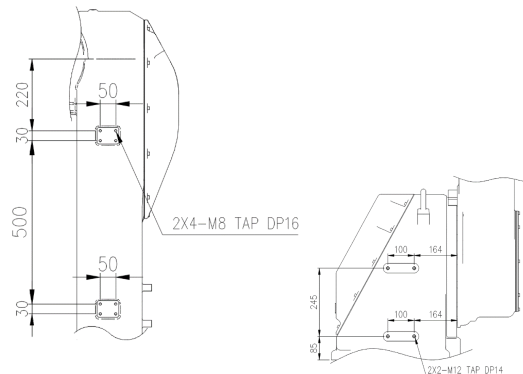
Items		Specification	
Model		YP015-22	
Payload	Wrist	15 Kg	
	Outer arm	15 Kg	
	Inner arm	15 Kg	
Structure		Articulated	
Degree of Freedom		6 Axes	
STROKE	Main	S $\pm 2.443 \text{ rad } (\pm 140^\circ)$	
		H $-0.873 \sim +4.014 \text{ rad } (-40^\circ \sim +210^\circ)$	
		V $-1.222 \sim +4.537 \text{ rad } (-70^\circ \sim +90^\circ)$	
Wrist	R2	$\pm 6.283 \text{ rad } (\pm 360^\circ)$	
	B	$\pm 6.283 \text{ rad } (\pm 360^\circ)$	
	R1	$\pm 6.283 \text{ rad } (\pm 360^\circ)$	
SPEED	Main	S	$2.793 \text{ rad/s } (160^\circ / \text{s})$
		H	$2.793 \text{ rad/s } (160^\circ / \text{s})$
		V	$2.793 \text{ rad/s } (160^\circ / \text{s})$
	Wrist	R2	$7.854 \text{ rad/s } (450^\circ / \text{s})$
		B	$9.425 \text{ rad/s } (540^\circ / \text{s})$
		R1	$10.472 \text{ rad/s } (600^\circ / \text{s})$
Repeatability		$\pm 0.2 \text{ mm}$	
Ambient Condition	Temp.	$0 \sim 40^\circ \text{C } (273 \sim 313 \text{K})$	
	Humid.	20~85%RH (non-condensing)	
Weight		600 kg	
Certificate No.		IECEx DEK 20.0016 (DEKRA 20ATEX0028)	
Explosion Proof	Ex Code	Ex ib [ib] pxb IIB T4 Gb Ex 2 G Ex Ib [Ib] pxb IIB T4 Gb	
	Ex Ib	Intrinsic Safety (Zone 1)	
	pxb	Pressurised	
	IIB	Gas Group : Ethylene	
	T4	Maximum Surface Temp. of Equipment : 135°C	
	Gb	Zone 1	

* Wall Installation : S-Axis speed 1.745rad / s (100° / s)

VIEW E Bolt Spec. for App.Cable



VIEW D Bolt Spec. for App.Cable



** Technical specification subject to change without notice